

DUCT MOUNTED FILTER BOXES

Standardised Filter Housing for Spiral Ductwork
Grades G2, G4 and F7 to EN779
Coarse 65%, Course 75%, ePM1 60%

Applications

Duct Mounted Filter Boxes are a standardised range of housings for air filters for applications in spiral wound duct work ranging from grades G2 to F7 to EN779.

Low grade panel or bag filters can offer protection to inline system components such as fans, coils and heaters from dust particles.

Various airflows can be supported in all of the standard wound spiral dimensions.

Description

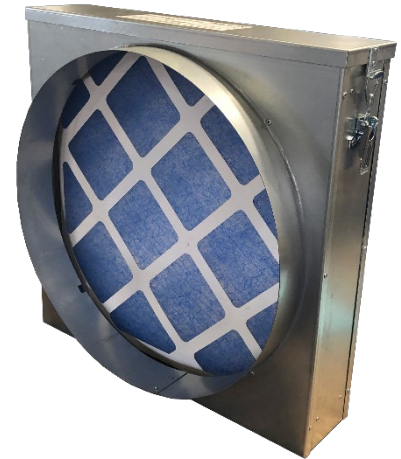
Duct Mounted Filter Boxes are manufactured in galvanised sheet steel and include either a Grade G2 Glass Panel Filter, a Grade G4 General Purpose Bag Filter, or an F7 Mini Cell Panel Filter.

Duct Mounted Filter Boxes have a removable lid which is clamped in place by adjustable toggle clamps and utilising a closed cell gasket seal to ensure the housing is airtight.

The Duct Mounted Filter Box can be rotated at time of installation to provide side or top access as required.

Technical

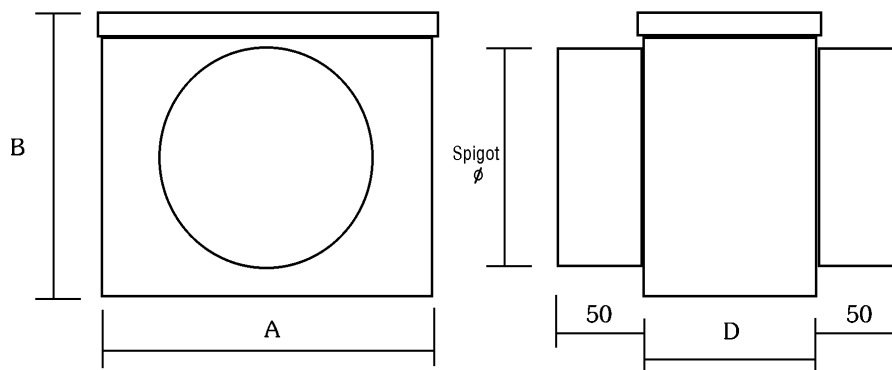
Normally 0.9mm GSS. Self-finished
Lid retained by adjustable toggle clamps.
Spigots are a male connection (e.g. 5mm less than the dimension stated)

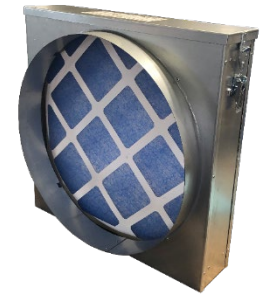


G2 Panel Filter Duct Box



G4 Bag Filter Duct Box





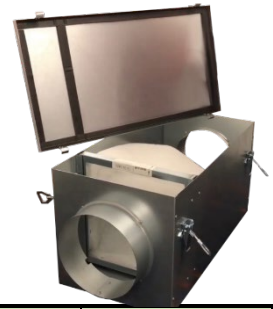
DUCT MOUNTED FILTER CASINGS – PANELS

G2 = Coarse 65%

G4 = Coarse 75%

Case Dimensions				Flow Rate m ³ /s	PD Pa	Filter		Case + Filter Part No.	Spare Filter Only Part No.
Spigot*	H (B)	W (A)	D			Type	Grade		
100	200	200	122	0.10	75	PANEL	G2	1825101	1110501
125	200	200	122	0.10	75	PANEL	G2	1825102	1110501
150	200	200	122	0.10	75	PANEL	G2	1825103	1110501
160	200	200	122	0.10	75	PANEL	G2	1825104	1110501
200	300	300	122	0.16	75	PANEL	G2	1825105	1110502
250	300	300	122	0.16	75	PANEL	G2	1825106	1110502
315	400	400	122	0.30	75	PANEL	G2	1825107	1110503
355	400	400	122	0.30	75	PANEL	G2	1825108	1110503
400	445	445	122	0.38	75	PANEL	G2	1825109	1110504
450	545	545	122	0.55	75	PANEL	G2	1825110	1110505
500	545	545	122	0.55	75	PANEL	G2	1825111	1110505
560	645	645	122	0.78	75	PANEL	G2	1825112	1110506
610	645	645	122	0.78	75	PANEL	G2	1825113	1110506
630	645	645	122	0.78	75	PANEL	G2	1825114	1110506
100	200	200	122	0.09	75	PANEL	G4	1825401	1130501
125	200	200	122	0.09	75	PANEL	G4	1825402	1130501
150	200	200	122	0.09	75	PANEL	G4	1825403	1130501
160	200	200	122	0.09	75	PANEL	G4	1825404	1130501
200	300	300	122	0.21	75	PANEL	G4	1825405	1130502
250	300	300	122	0.21	75	PANEL	G4	1825406	1130502
315	400	400	122	0.37	75	PANEL	G4	1825407	1130503
355	400	400	122	0.37	75	PANEL	G4	1825408	1130503
400	445	445	122	0.46	75	PANEL	G4	1825409	1130304
450	545	545	122	0.70	75	PANEL	G4	1825410	1130305
500	545	545	122	0.70	75	PANEL	G4	1825411	1130305
560	645	645	122	0.99	75	PANEL	G4	1825412	1130306
NON STANDARD								1825999	-

*Spigots are a male connection (e.g. 5mm less than the dimension stated)



DUCT MOUNTED FILTER CASINGS – BAGS

G4 = Coarse 65%

Case Dimensions				Flow Rate m ³ /s	PD Pa	Filter		Case + Filter Part No.	Spare Filter Only Part No.
Spigot*	H (B)	W (A)	D			Type	Grade		
100	200	200	450	0.14	70	BAG	G4	1825201	1410601
125	200	200	450	0.14	70	BAG	G4	1825202	1410601
150	200	200	450	0.14	70	BAG	G4	1825203	1410601
160	200	200	450	0.14	70	BAG	G4	1825204	1410601
200	300	300	550	0.35	70	BAG	G4	1825205	1410602
250	300	300	550	0.35	70	BAG	G4	1825206	1410602
315	400	400	600	0.58	70	BAG	G4	1825207	1410603
355	400	400	600	0.58	70	BAG	G4	1825208	1410603
400	445	445	650	1.03	70	BAG	G4	1825209	1410604
450	545	545	650	1.30	70	BAG	G4	1825210	1410605
500	545	545	650	1.30	70	BAG	G4	1825211	1410605
NON STANDARD								1825999	-

*Spigots are a male connection (e.g. 5mm less than the dimension stated)



DUCT MOUNTED FILTER CASINGS – MINICELL

F7 = ePM1 60%

Case Dimensions				Flow Rate m ³ /s	PD Pa	Filter		Case + Filter Part No.	Spare Filter Only Part No.
Spigot*	H (B)	W (A)	D			Type	Grade		
100	200	200	250	0.10	120	MINICELL	F7	1825301	1450512
125	200	200	250	0.10	120	MINICELL	F7	1825302	1450512
150	200	200	250	0.10	120	MINICELL	F7	1825303	1450512
160	200	200	250	0.10	120	MINICELL	F7	1825304	1450512
200	300	300	250	0.22	120	MINICELL	F7	1825305	1450513
250	300	300	250	0.22	120	MINICELL	F7	1825306	1450513
315	500	500	250	0.62	120	MINICELL	F7	1825307	1450514
355	500	500	250	0.62	120	MINICELL	F7	1825308	1450514
400	500	500	250	0.62	120	MINICELL	F7	1825309	1450514
450	500	500	250	0.62	120	MINICELL	F7	1825310	1450514
500	600	600	250	0.94	120	MINICELL	F7	1825311	1450515
560	600	600	250	0.94	120	MINICELL	F7	1825312	1450515
NON STANDARD								1825999	-

*Spigots are a male connection (e.g. 5mm less than the dimension stated)